

Baldwin East

Medical/Professional Office

EquityPartners
we provide Office Space



PROPERTY HIGHLIGHTS:

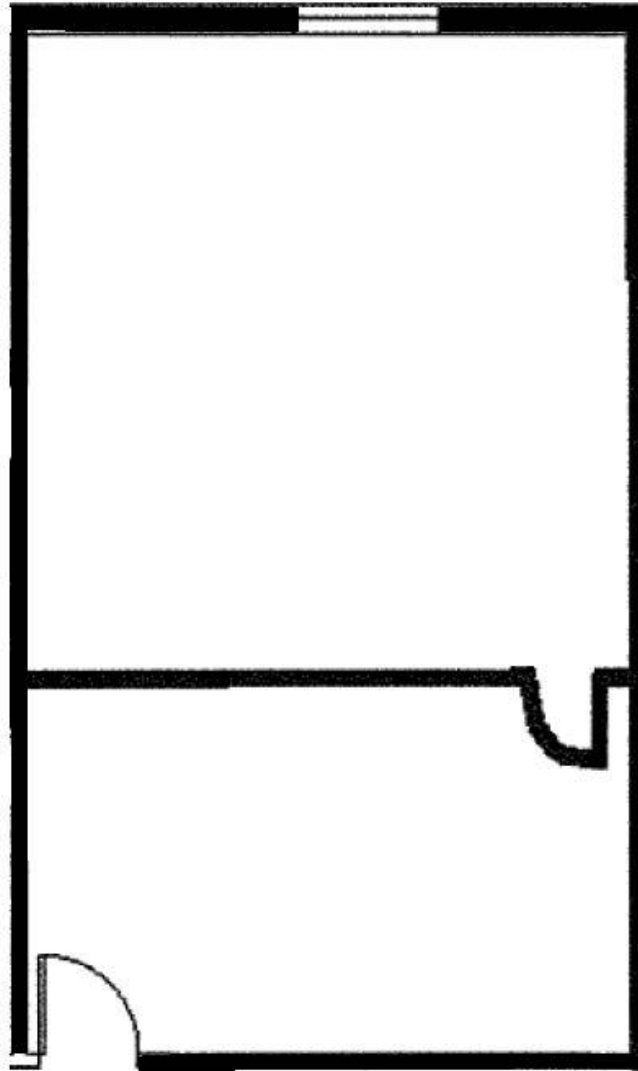
- 1300 North Semoran Blvd. – 688 RSF
- 1320 North Semoran Blvd. – 618 – 2,224 RSF
- Semoran Blvd. Monument Signage Available (Approx. 50,000 cars/day)
- Ample Parking Available
- Excellent Access, adjacent SR 408, SR 417 and SR 50
- Close proximity to Orlando International Airport and Downtown Orlando
- Full-Service Lease, Janitorial and Utilities Included
- Professionally Managed & Onsite Ownership

For additional information, please contact:

O: 407.660.4949

Leasing@equitypartners.net

Faith Pamplin
Gabriela Ferreira
Mike Fess
Kristen Fess
Michael G. Fess



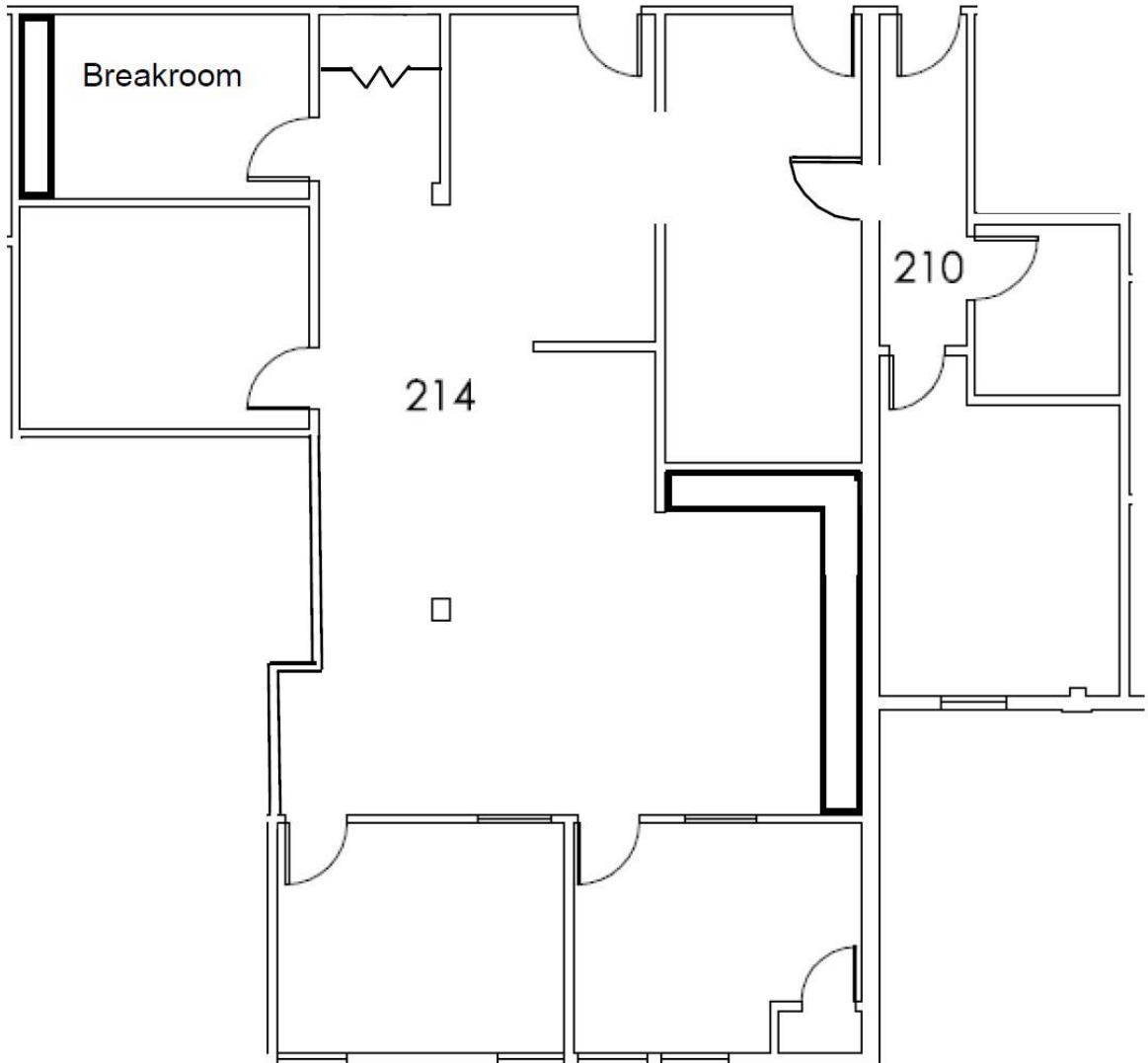
For additional information, please contact:

O: 407.660.4949

Leasing@equitypartners.net

Faith Pamplin
Gabriela Ferreira
Mike Fess
Kristen Fess
Michael G. Fess

- Available
- Over 2,200 contiguous square feet
- Multiple private offices and open work areas
- Full Breakroom



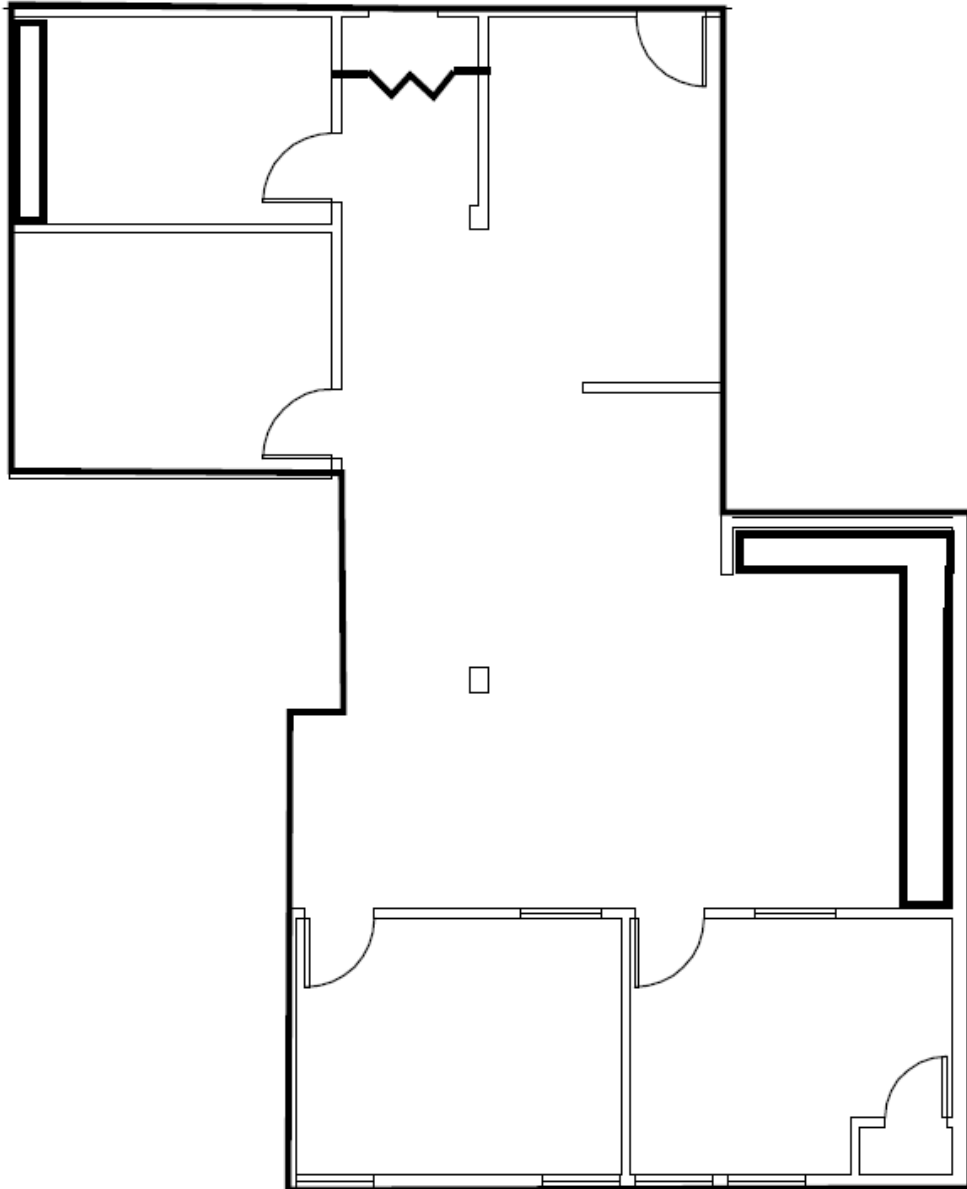
For additional information, please contact:

O: 407.660.4949

Leasing@equitypartners.net

Faith Pamplin
Gabriela Ferreira
Mike Fess
Kristen Fess
Michael G. Fess

- Available
- Multiple private offices and an open meeting area
- Large Breakroom



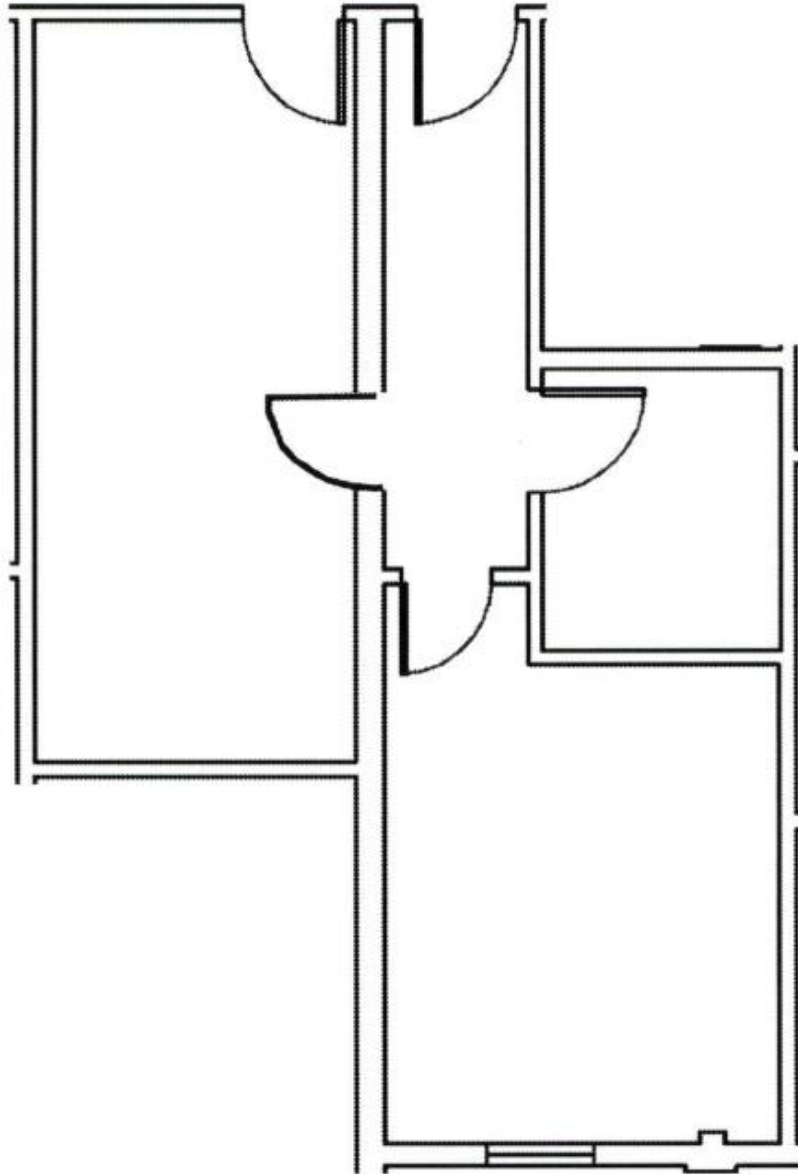
For additional information, please contact:

O: 407.660.4949

Leasing@equitypartners.net

Faith Pamplin
Gabriela Ferreira
Mike Fess
Kristen Fess
Michael G. Fess

- Available
- Multiple private offices



For additional information, please contact:

O: 407.660.4949

Leasing@equitypartners.net

Faith Pamplin
Gabriela Ferreira
Mike Fess
Kristen Fess
Michael G. Fess