

Baldwin East Medical/Professional Office

EquityPartners
we provide Office Space



PROPERTY HIGHLIGHTS:

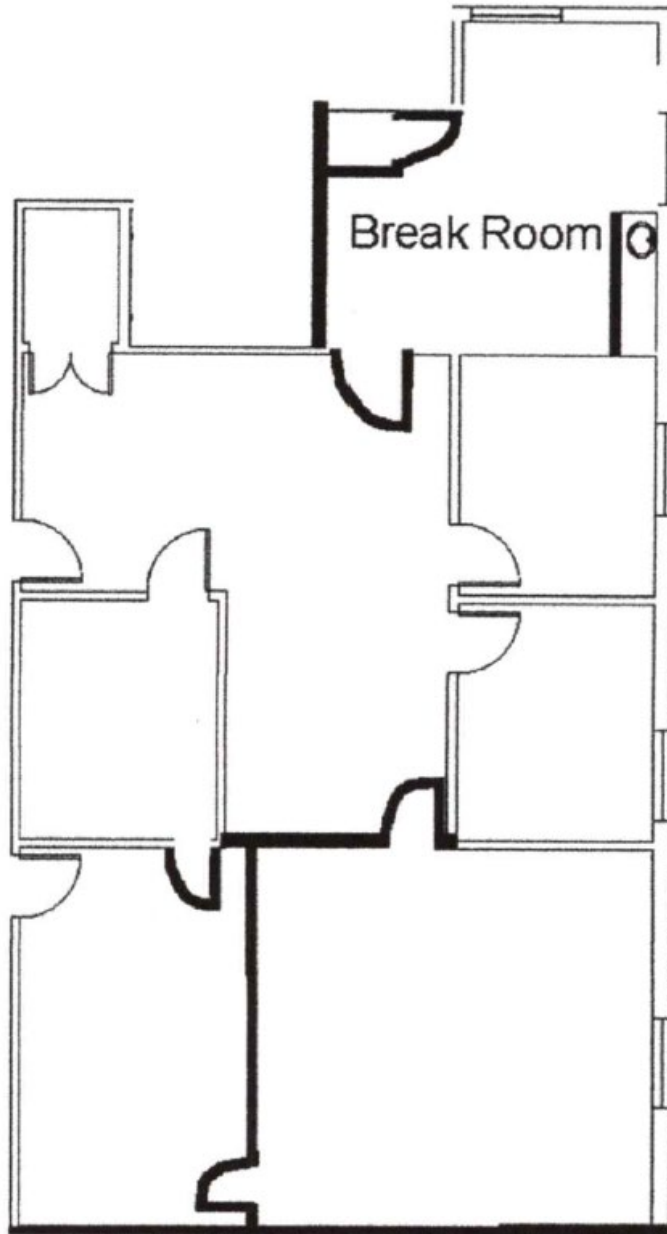
- 1300 North Semoran Blvd. Suite 210 Orlando, FL 32807
- 1,837 Rentable Square Feet Available April 2023
- Semoran Blvd. Monument Signage Available (Approx. 50,000 cars/day)
- Ample Parking Available
- Excellent Access, adjacent SR 408, SR 417 and SR 50
- Close proximity to Orlando International Airport and Downtown Orlando
- Full Service Lease, Janitorial Included
- Professionally Managed & Onsite Ownership

For additional information, please contact:

O: 407.660.4949

Leasing@equitypartners.net

Faith Pamplin
Gabriela Ferreira
Mike Fess
Kristen Fess
Michael G. Fess



For additional information, please contact:

O: 407.660.4949

Leasing@equitypartners.net

Faith Pamplin
Gabriela Ferreira
Mike Fess
Kristen Fess
Michael G. Fess