

# Baldwin East

## Medical/Professional Office

**EquityPartners**  
we provide Office Space



## PROPERTY HIGHLIGHTS:

- 1300 North Semoran Blvd. Suite 195 Orlando, FL 32807
- 3,058 Rentable Square Feet Available
- Semoran Blvd. Monument Signage Available (Approx. 50,000 cars/day)
- Ample Parking Available
- Excellent Access, adjacent SR 408, SR 417 and SR 50
- Close proximity to Orlando International Airport and Downtown Orlando
- Full Service Lease, Janitorial Included
- Professionally Managed & Onsite Ownership

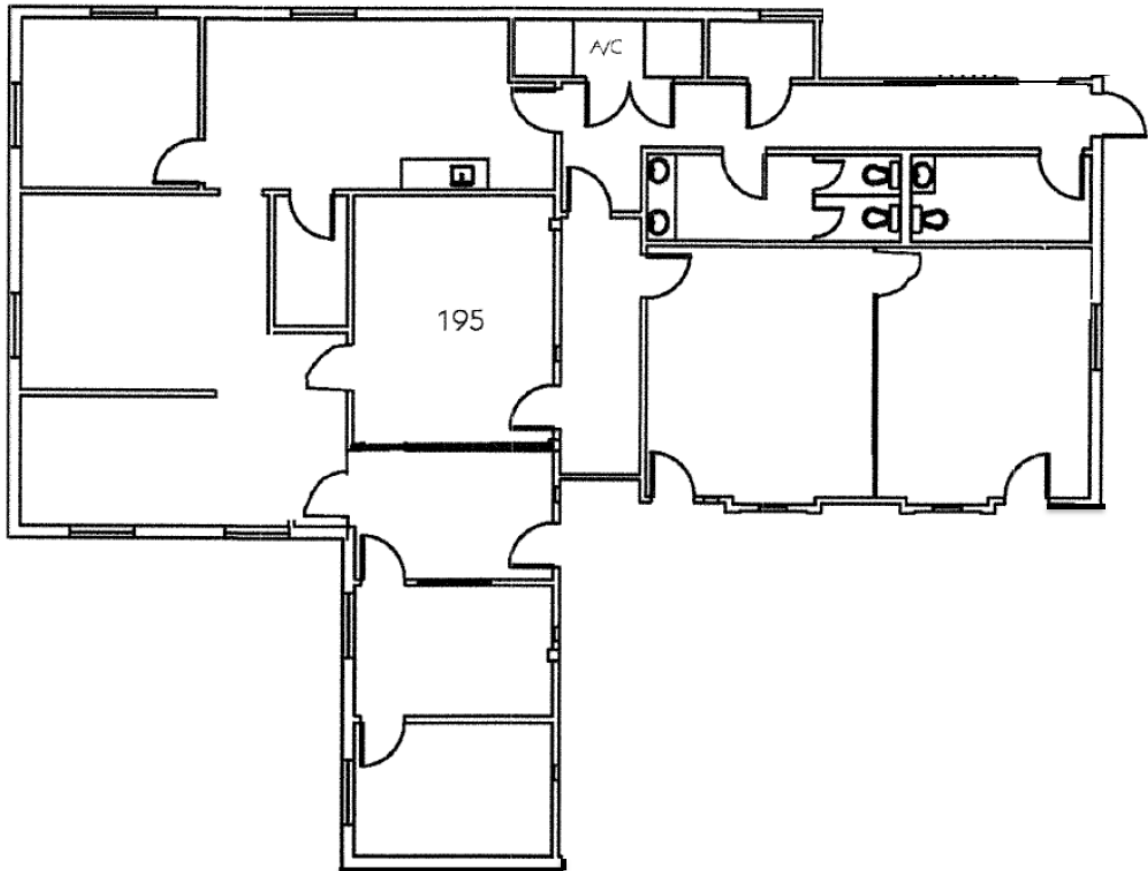
For additional information, please contact:

O: 407.660.4949

[Leasing@equitypartners.net](mailto:Leasing@equitypartners.net)

Faith Pamplin  
Gabriela Ferreira  
Mike Fess  
Kristen Fess  
Michael G. Fess

- Large breakroom
- Restrooms within the space
- Private exit & entrance



For additional information, please contact:

O: 407.660.4949

[Leasing@equitypartners.net](mailto:Leasing@equitypartners.net)

Faith Pamplin  
Gabriela Ferreira  
Mike Fess  
Kristen Fess  
Michael G. Fess