

# Alafaya Corporate Center

**EquityPartners**  
we provide Office Space

1,626 TO 20,265 RSF Available



## PROPERTY HIGHLIGHTS:

- 2000 North Alafaya Trail – 2,045 RSF Sublease Available
- 2100 North Alafaya Trail – 1,626 to 11,434 RSF Available
- 100% Office Space with  $\pm 1\%$  Common Area Factor
- Adjacent to Central Florida Research Park & UCF
- Versatile floorplans and move-in ready suites
- Close Proximity to SR 408 and SR 417
- No After-Hours Air Charges
- Direct Alafaya Trail Building Signage Available
- Prominent Monument Signage Available (Approx 50,000 cars/day)

PLEASE CONTACT:

O: 407.660.4949

E: [Leasing@equitypartners.net](mailto:Leasing@equitypartners.net)

Mike Fess

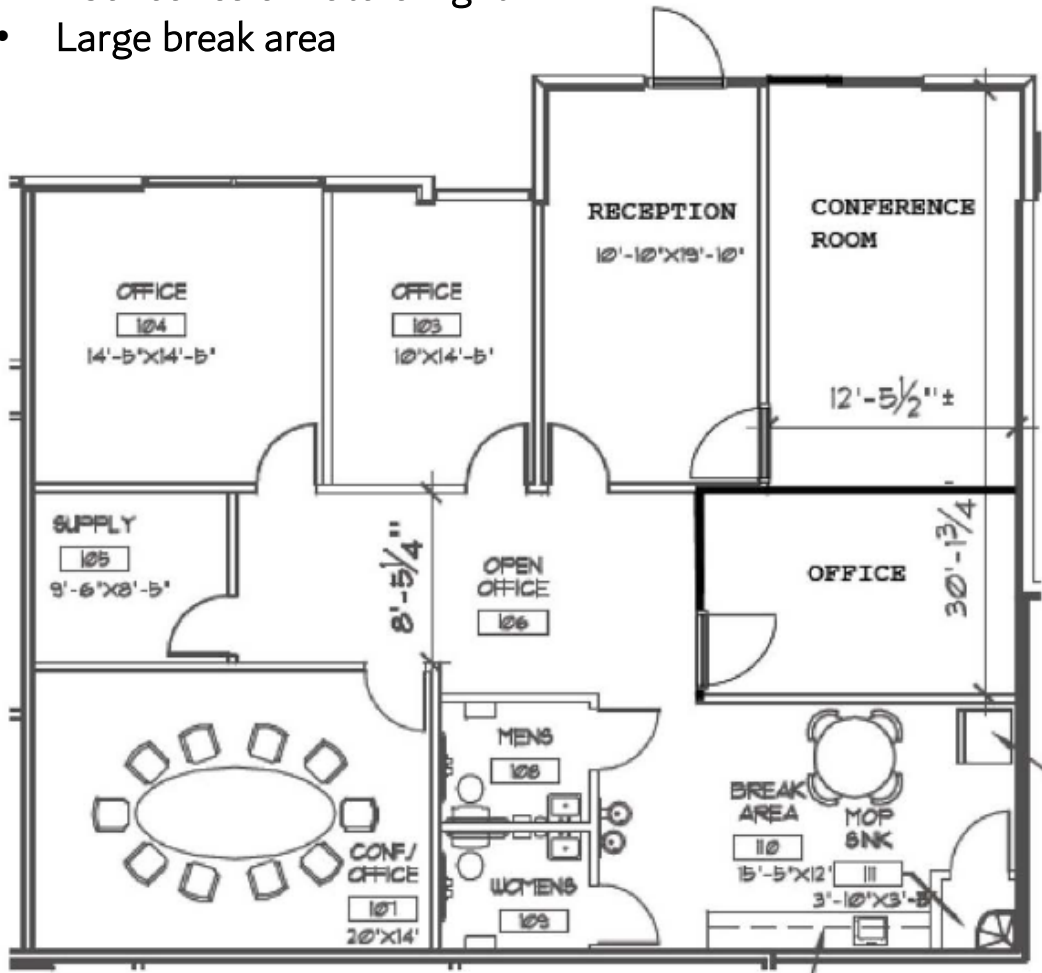
Faith Pamplin

Gabriela Ferreira

Kristen Fess

Michael G. Fess

- Readily Available Sublease
- Multiple Private Offices & Conference Rooms
- Abundance of natural light
- Large break area



PLEASE CONTACT:

O: 407.660.4949

E: [Leasing@equitypartners.net](mailto:Leasing@equitypartners.net)

Mike Fess

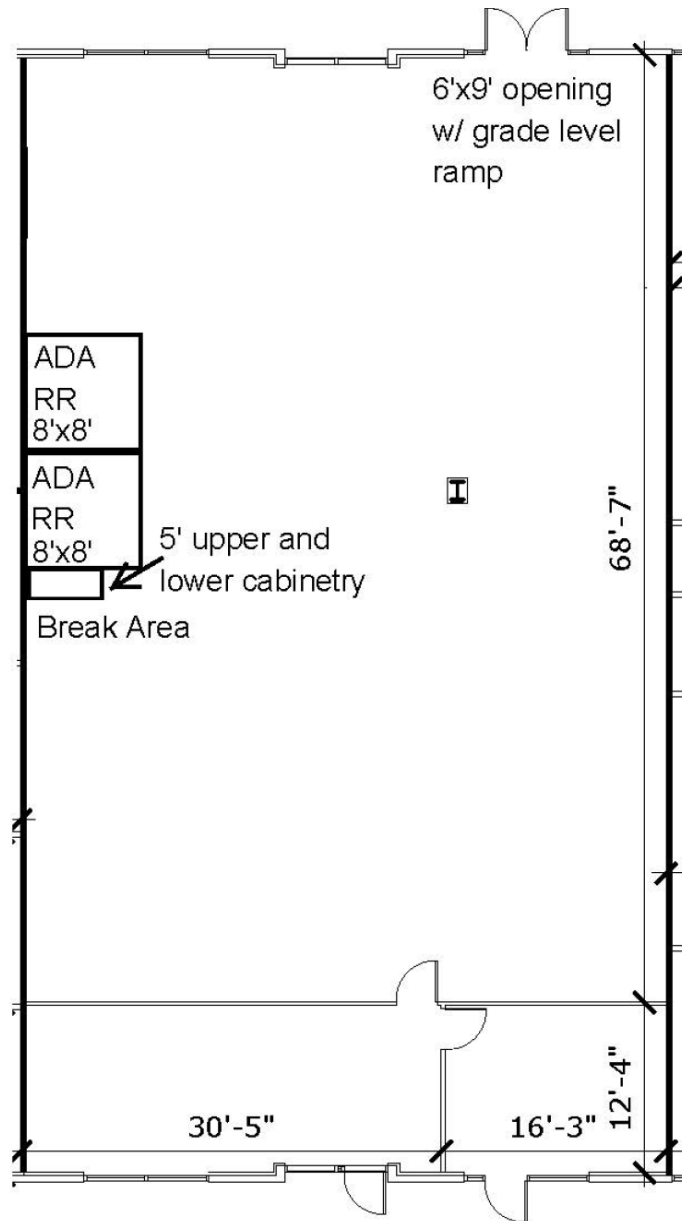
Faith Pamplin

Gabriela Ferreira

Kristen Fess

Michael G. Fess

- Available Q4 2023
- Open floorplan with open to the deck ceiling
- 6 ft. by 9 ft. double door opening



PLEASE CONTACT:

O: 407.660.4949

E: [Leasing@equitypartners.net](mailto:Leasing@equitypartners.net)

Mike Fess

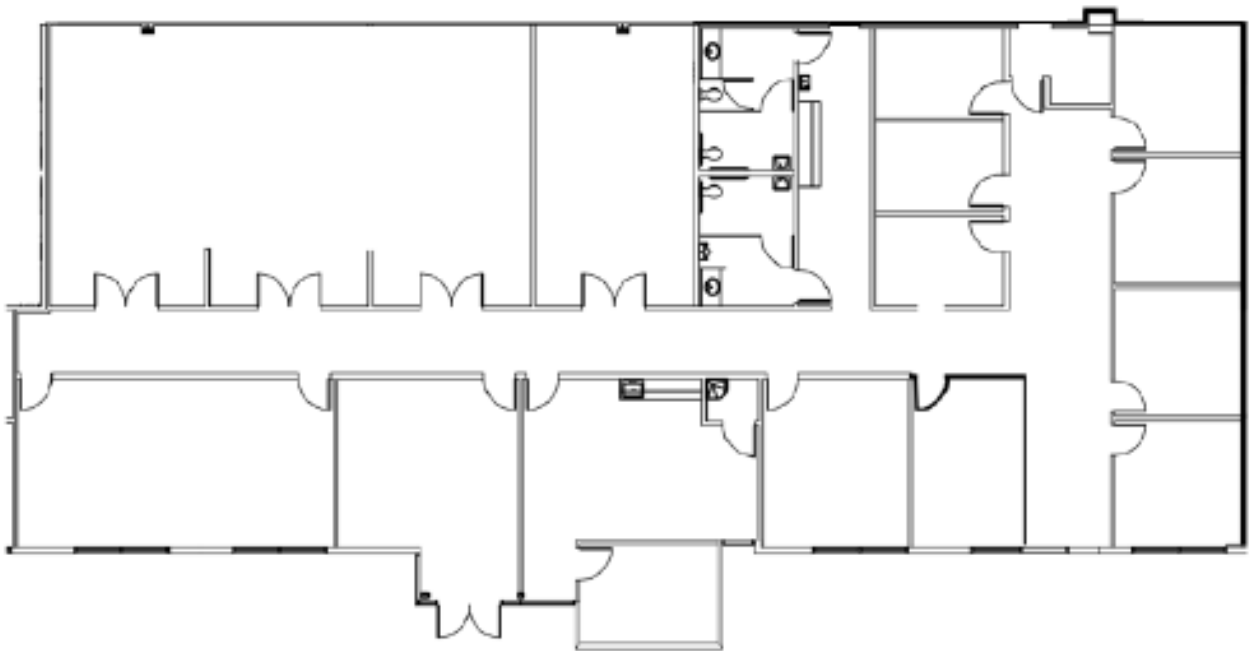
Faith Pamplin

Gabriela Ferreira

Kristen Fess

Michael G. Fess

- Available January 2024
- Multiple offices with glass
- Large break room and flexible large rooms/conference rooms
- Prominent Alafaya Trail Monument Signage Available



PLEASE CONTACT:

O: 407.660.4949

E: [Leasing@equitypartners.net](mailto:Leasing@equitypartners.net)

Mike Fess

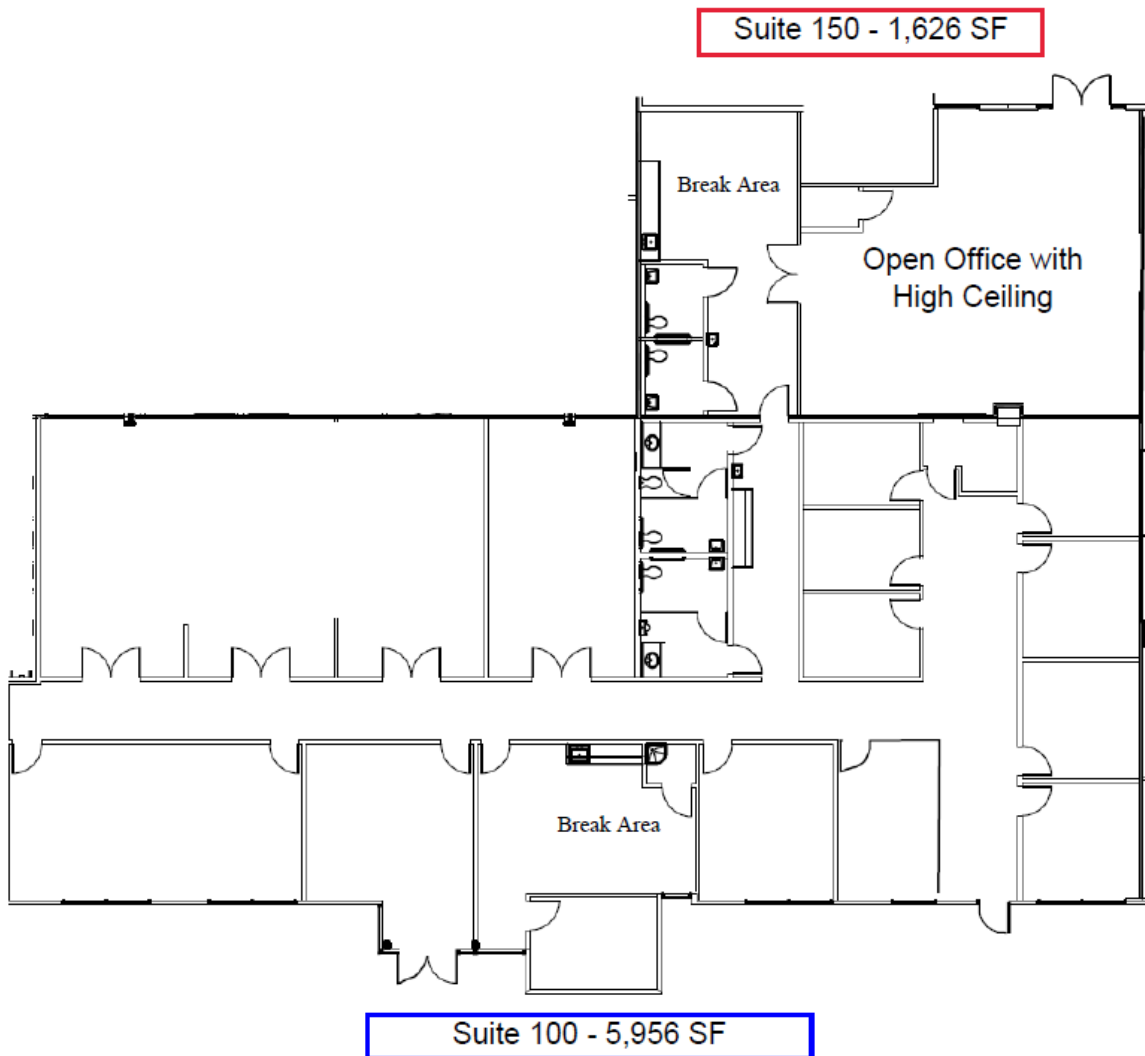
Faith Pamplin

Gabriela Ferreira

Kristen Fess

Michael G. Fess

- Available January 2024
- Multiple offices with glass
- Large break room and flexible large rooms/conference rooms
- Mix of traditional and open office
- Prominent Alafaya Trail Monument Signage available



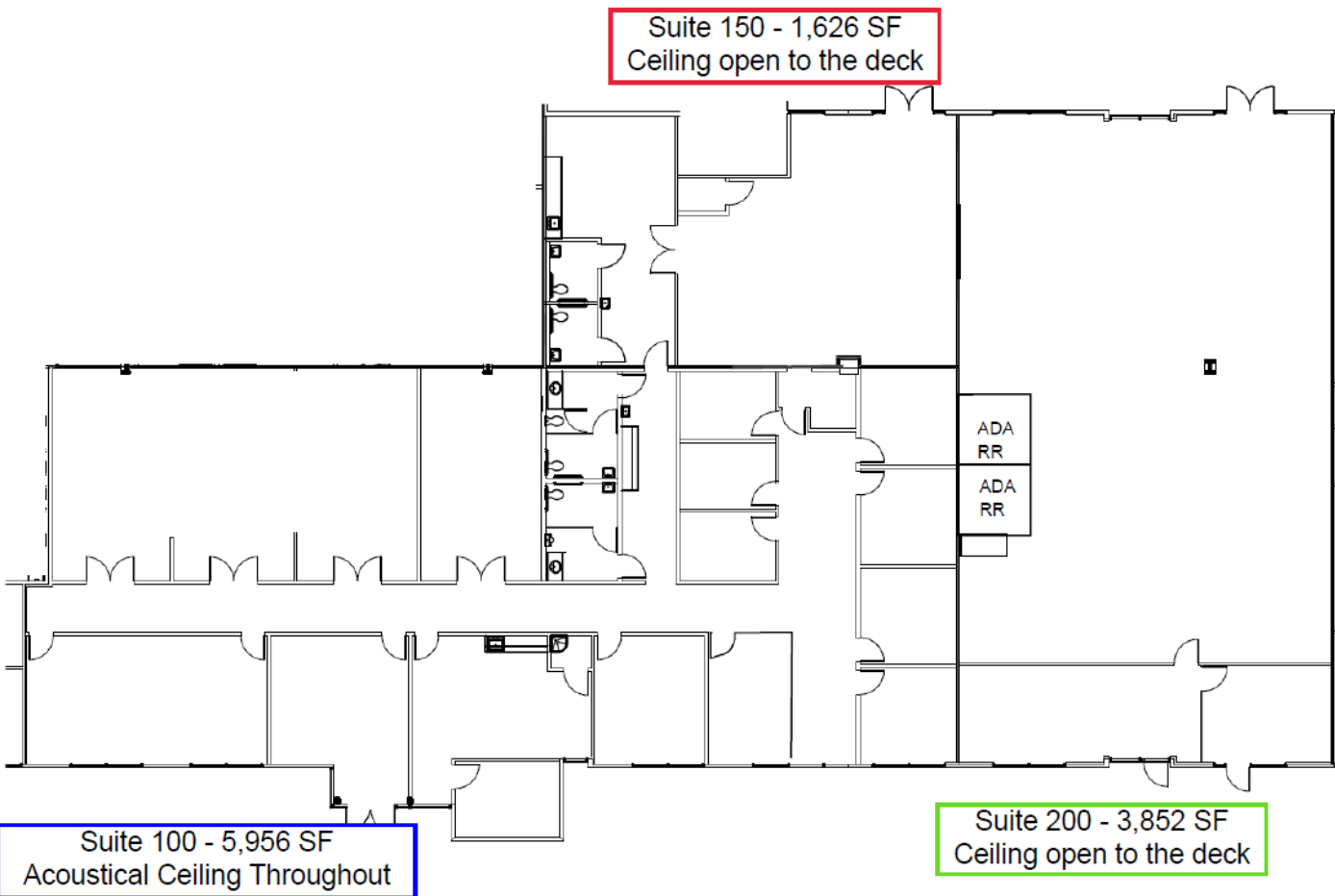
PLEASE CONTACT:

O: 407.660.4949

E: [Leasing@equitypartners.net](mailto:Leasing@equitypartners.net)

Mike Fess  
Faith Pamplin  
Gabriela Ferreira  
Kristen Fess  
Michael G. Fess

- Available January 2024
- Over 11,000 SF of contiguous space available
- Mix of open and traditional Office
- Ideal for research and development, simulation, tech, and more
- Prominent Alafaya Trail Monument Signage Available



PLEASE CONTACT:

O: 407.660.4949

E: [Leasing@equitypartners.net](mailto:Leasing@equitypartners.net)

Mike Fess

Faith Pamplin

Gabriela Ferreira

Kristen Fess

Michael G. Fess